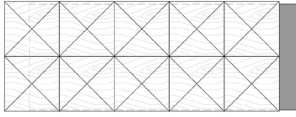


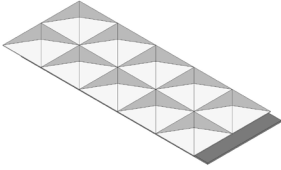
APEX

KONCEPT COLLECTION

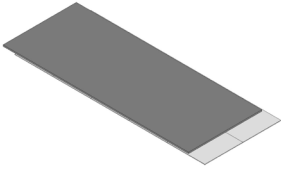
WOOD



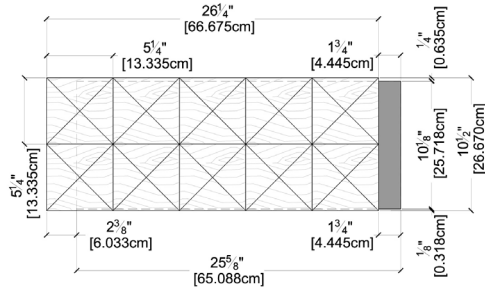
TOP VIEW



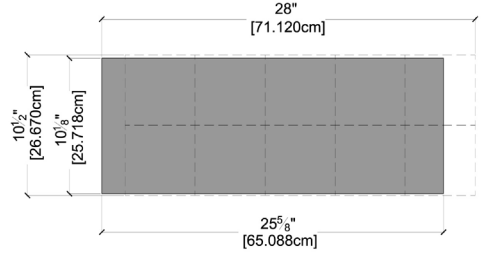
TOP VIEW 3D MODEL



BOTTOM VIEW 3D MODEL



TOP VIEW DIMENSIONS



BOTTOM VIEW DIMENSIONS



SIDE VIEW

SPECIFICATIONS

◆ **SPECIES (s)**

Defined by color
(see color chart)

◆ **CUT PATTERN**

Angled

◆ **THICKNESS**

*15/16 inches (23.81 mm)

◆ **INSTALL DIRECTION**

Horizontal, Vertical or Diagonal

◆ **INSTALLATION**

Construction Glue & Nails

◆ **GRADE (s)**

Character

◆ **COVERAGE/TILE**

*1.91 sf. (0.177 m²)

◆ **WEIGHT/TILE**

*4.00 lbs. (1.81 kg) Walnut
 *4.10 lbs. (1.85 kg) Oak

◆ **TILES/BOX**

8 Pieces

◆ **SURFACE TEXTURE (st)**

Defined by color
(see color chart)

◆ **COVERAGE/BOX**

*15.28 sf. (1.419 m²)

◆ **WEIGHT/BOX**

*35.70 lbs. (16.19 kg) Walnut
 *36.50 lbs. (16.55 kg) Oak

* Weight, coverage and dimensions may vary depending on finish and the natural expansion and contraction of wood.

COLORS / WOOD - 8 AVAILABLE



Product Sample Disclaimer

Created to be a one-of-a-kind piece of nature's artistry, each and every Trinity Surfaces wood product carries distinct variations in finish, patina, texture, grain and overall character that create the unique diversity and natural elegance of our 3D Wood Wall Panels. It is virtually impossible to capture – in a small sample – the entire range of color variation and character that will be present in the wall covering you will receive. To better understand the unique look of a Trinity Surfaces finished wall covering in your space, we recommend consulting your sales representative for more details.

Installation and Performance Disclaimer

Environmental conditions, such as exposure to light, and fluctuations in temperature and humidity, will greatly affect product performance from initial installation throughout its life. Refer to our website for installation guidelines or see your local sales representative for more information on proper steps and specific environmental conditions to successfully install, care for and ensure the lifelong performance of your 3D Wood Wall Panels.

For more information, please contact us at 1-866-774-3390 or visit trinitysurfaces.com.